



Fond du Lac
920-923-4433

Oshkosh
920-235-0095

Fox Valley
920-202-8360

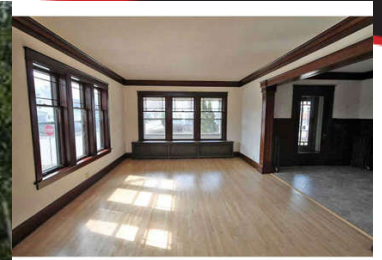
Green Lake
920-294-0121



www.adashunjones.com



Kevin Jones
Cell: (920) 251-6748
kevin@adashunjones.com



Est. Monthly Payment
(Based on 10% down payment)
15 yr. mortgage: \$1,479.57
20 yr. mortgage: \$1,223.61
30 yr. mortgage: \$979.98

55 S PARK AVE FOND DU LAC WI 54935

\$214,900 MLS# 50159532

Character bounds this 3200 sq ft + 5 bdrm 2 ba colonial charmer! Highlights include completely refinished HW floors throughout, new kitchen w/oak cabinets, solid stone counter tops, appliance package, great work space & pantry. Soaring ceilings & natural light, lg LR, dining areas, foyer & big bdrms suit your entertaining & day to day needs. All 5 bdrms on one floor, Master Suite w/walk-in closet.

FEATURES

County	Fond du Lac
Muni.	City of Fond du Lac
Acreage	0.22
Source of Acreage Info	Assessor/Public Record
Lot Size	66x148
Source of Lot Size Info	Assessor/Public Record
Zoning	Residential
Taxes (2017)	4,954
Total Sq. Ft.	3,208
Above Grade Sq. Ft.	3,208
Age/Year Built	1916
Exterior Finish	Stucco
Style	2 Story
School Dist.	Fond du Lac
Elementary School	Chegwin
Middle School	Sabish
High School	Fond du Lac

AMENITIES

Type.	Residential
Heating/Cooling	Central A/C, Other-See Remarks, Radiant
Waste	Municipal Sewer
Water	Municipal Public Water
Basement	Other-See Remarks, Stone
Garage Style	Attached
Garage Spaces	2.5 Car (min width 24`)
Garage Total	2

INCLUSIONS / EXCLUSIONS

Inclusions: None
Exclusions: Seller's Personal Property

DIRECTIONS

From Johnson Street, South on Park Avenue to Address

ROOM SIZES

Room, Dimensions, Level	Room, Dimensions, Level
Master Bedroom, 17X14, Upper	Kitchen, 18X12, Main
Bedroom 2, 13X12, Upper	Formal Dining Room, 20X14, Main
Bedroom 3, 14X10, Upper	Living Room, 20X14, Main
Bedroom 4, 17X14, Upper	Den/Office, 15X14, Main
Bedroom 5, 12X10, Upper	Foyer, 20X10, Main
Family Room, 14X13, Main	



In our opinion the information on this sheet is true but not guaranteed, and is subject to change or correction at any time.

