



Fond du Lac  
920-923-4433

Oshkosh  
920-235-0095

Fox Valley  
920-202-8360

Green Lake  
920-294-0121

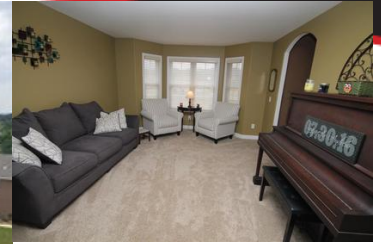


www.adashunjones.com



Kevin Jones  
Cell: (920) 251-6748  
kevin@adashunjones.com

Est. Monthly Payment  
(Based on 10% down payment)  
15 yr. mortgage: \$2,546.74  
20 yr. mortgage: \$2,106.15  
30 yr. mortgage: \$1,686.81



N5536 DENEVEU LN FOND DU LAC WI 54937-6614

\$369,900      MLS# 50180745

Location, Space & Style! This 4 BR, 2 Full & 2 Half BA 2 story has an ideal SE location in near Lake Deneveu. Highlights include gorgeous master suite w/ double sided fireplace, huge walk in closet, tiled bath w/jetted soaking tub, and 4 bedrooms all on the same level! Kitchen with Island, formal dining, & less formal sunroom/breakfast nook, new LG stainless appliances package included! Lower level offers a walk-up to the garage, is finished with Theatre/Rec Room & 5th BR or craft/exercise room! Updates include new water treatment system & Softener, new lighting fixtures, landscape stone around entire house, & remodeled upstairs 4th bedroom/office. HUGE 3.5 car garage appx 31x33 & main floor laundry room!

### FEATURES

County	Fond du Lac
Muni.	Town of Empire
Acreage	1
Source of Acreage Info	Assessor/Public Record
Lot Size	238x201
Source of Lot Size Info	Assessor/Public Record
Lot Desc.	Cul-De-Sac
Zoning	Residential
Taxes (2017)	4,662
Total Sq. Ft.	3,756
Above Grade Sq. Ft.	2,656
Below Grade Sq. Ft.	1,100
Age/Year Built	2005
Exterior Finish	Stone, Vinyl
Style	2 Story
School Dist.	Fond du Lac
Elementary School	Lakeshore
Middle School	Theisen
High School	Fond du Lac

### AMENITIES

Type.	Residential
Heating/Cooling	Central A/C, Forced Air
Waste	Municipal Sewer
Water	Shared Private Well
Basement	Poured Concrete
Garage Style	Attached
Garage Spaces	3 or 3.5 Cars
Garage Total	3
Misc. Exterior	Deck

### INCLUSIONS / EXCLUSIONS

Inclusions: Range, Refrigerator, Dishwasher, Microwave, Stainless Steel Kitchen Appliance Package, Water Treatment Iron Curtain, Water Softener  
Exclusions: Washer/Dryer, Fire Pit, Negotiable Items Throughout, Seller's Personal Property

### DIRECTIONS

E Pioneer Road to Right on Hwy 45, Right on Boyke Drive, Slight left on Deneveu Lane.

### ROOM SIZES

Room, Dimensions, Level	Room, Dimensions, Level
Master Bedroom, 22X13, Upper	Formal Dining Room, 15X11, Main
Bedroom 2, 11X11, Upper	Living Room, 17X13, Main
Bedroom 3, 11X10, Upper	Den/Office, 16X13, Main
Bedroom 4, 20x11, Upper	Other - See Remarks, 14X13, Lower
Dining Room, 12X11, Main	Theatre Room, 26X16, Lower
Laundry Room, 9X7, Main	Rec Room, 12X10, Lower
Kitchen, 18X12, Main	



In our opinion the information on this sheet is true but not guaranteed, and is subject to change or correction at any time.

