



Fond du Lac
920-923-4433

Oshkosh
920-235-0095

Fox Valley
920-202-8360

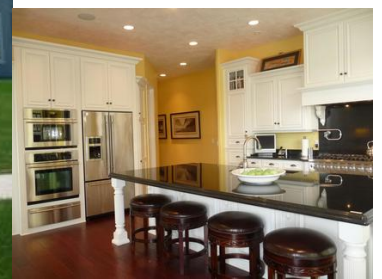
Green Lake
920-294-0121



www.adashunjones.com



Therese Massey
Cell: (920) 251-3358
therese@adashunjones.com



Est. Monthly Payment
(Based on 10% down payment)
15 yr. mortgage: \$4,715.50
20 yr. mortgage: \$3,899.71
30 yr. mortgage: \$3,123.26

421 N COUNTRY LN FOND DU LAC WI 54935

\$684,900 MLS# 50187270

Spring Lake & Southern Comfort! Enjoy lake living in the city with this phenomenal ranch that offers over 3400 sq. ft. of quality construction that beautifully marries craftsmanship with superb design. Soaring ceilings, beautiful cabinetry and designer woodwork enhance this beautiful home that offers 3 large bedrooms and 2.5 baths. An open concept Great Room, Dining Room and screen porch offer living space with drama. A superior master suite with a walk-in shower, sauna and spa tub make life so enjoyable! A huge 3-4 car garage with basement entry, geo thermal heating and cooling and a host of special features make this home a delight to own. Make Your Appointment Today!

FEATURES

County	Fond du Lac
Muni.	City of Fond du Lac
Acreage	0.66
Source of Acreage Info	Plat Map/Survey
Zoning	Residential
Taxes (2017)	14,108
Total Sq. Ft.	3,478
Above Grade Sq. Ft.	3,478
Age/Year Built	2009
Exterior Finish	Stucco
Style	1 Story
School Dist.	Fond du Lac
Elementary School	Lakeshore
Middle School	Sabish
High School	Fond du Lac

ROOM SIZES

Room, Dimensions, Level	Room, Dimensions, Level
Master Bedroom, 23x18, Main	Formal Dining Room, 14x14, Main
Bedroom 2, 16x13, Main	Living Room, 22x22, Main
Bedroom 3, 15x13, Main	Screen Porch, 13x13, Main
Laundry Room, 10x7, Main	Foyer, 21x7, Main
Kitchen, 20x18, Main	Mud Room, 9x8, Main

AMENITIES

Type.	Residential
Heating/Cooling	Central A/C, Geothermal, Multiple Units, Zoned Heating
Waste	Municipal Sewer
Water	Municipal Public Water
Basement	Poured Concrete
Garage Style	Attached
Garage Spaces	3 or 3.5 Cars
Garage Total	3
Waterfront	Yes
Water Body Name	Spring Lake
Misc. Exterior	Patio

INCLUSIONS / EXCLUSIONS

Inclusions: Range, Refrigerator, Built-In Oven & Microwave, Wine Refrigerator, Ice Maker, Water Softener, Sound System & Speakers, Central Vac & Attachments.
Exclusions: Television Sets & Sellers Personal Property.

DIRECTIONS

East on Hwy 23, North on Country Lane to Address.



In our opinion the information on this sheet is true but not guaranteed, and is subject to change or correction at any time.

