



Fond du Lac
920-923-4433

Oshkosh
920-235-0095

Fox Valley
920-202-8360

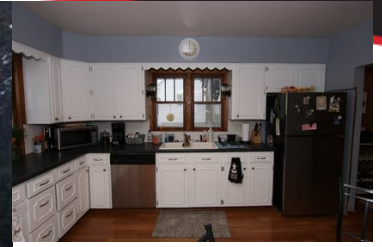
Green Lake
920-294-0121



www.adashunjones.com



Brooke Boyle-Schneider
Cell: 920.979.9225
brooke@adashunjones.com



Est. Monthly Payment
(Based on 10% down payment)
15 yr. mortgage: \$1,204.18
20 yr. mortgage: \$995.85
30 yr. mortgage: \$797.57

204 S ELM ST CAMPBELLSPORT WI 53010

\$174,900 MLS# 50192370

Truly a Treasure right in the heart of Campbellsport. Expect to be surprised when you step inside of this 4 BR cape cod with over 2300 sq. ft. of living space! 2 Main floor living rooms, main floor laundry/mud room, formal dining room, finished bar area in the lower level with another bonus room, and BIG upper bedrooms. Great character and quality throughout with built-ins, arched doorways, and natural hardwood floors. With lots of new updates too! Newly redone upper bath, new flooring, and newly finished lower level. New 2017 back half of the roof too! Just move in!!

FEATURES

County	Fond du Lac
Muni.	Village of Campbellsport
Acreage	0.2
Source of Acreage Info	Assessor/Public Record
Zoning	Residential
Taxes (2017)	3,173
Total Sq. Ft.	2,314
Above Grade Sq. Ft.	1,908
Below Grade Sq. Ft.	406
Age/Year Built	1941
Exterior Finish	Aluminum/Steel, Vinyl
Style	1.5 Story
School Dist.	Campbellsport

ROOM SIZES

Room, Dimensions, Level	Room, Dimensions, Level
Master Bedroom, 18x10, Upper	Kitchen, 13x11, Main
Bedroom 2, 16x10, Upper	Formal Dining Room, 11x10, Main
Bedroom 3, 11x12, Upper	Living Room, 15x14, Main
Bedroom 4, 16x10, Upper	Rec Room, 14x11, Lower
Family Room, 10x10, Main	Game Room, 12x21, Lower
Laundry Room, 13x8, Main	

AMENITIES

Type	Residential
Heating/Cooling	Radiant, Window A/C
Waste	Municipal Sewer
Water	Municipal Public Water
Basement	Block
Garage Style	Attached
Garage Spaces	1.5 Car
Garage Total	1

INCLUSIONS / EXCLUSIONS

Inclusions: Couch in FR, Refrigerator, dishwasher, double oven, cooktop, blinds, 3 window A/C units, 2 GDO remotes, garbage/ recycle bins, water softener
Exclusions: Seller's personal property, washer, dryer, bar stools

DIRECTIONS

Hwy 67 to Elm Street, South to address



In our opinion the information on this sheet is true but not guaranteed, and is subject to change or correction at any time.

