



Fond du Lac
920-923-4433

Oshkosh
920-235-0095

Fox Valley
920-202-8360

Green Lake
920-294-0121



www.adashunjones.com



Gail Sharpe
Cell: (920) 948-9414
gail@adashunjones.com

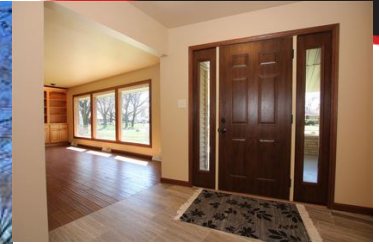
Est. Monthly Payment

(Based on 10% down payment)

15 yr. mortgage: \$2,126.76

20 yr. mortgage: \$1,758.83

30 yr. mortgage: \$1,408.64



6 ELM ACRES DR FOND DU LAC WI 54935-2903

\$308,900 MLS# 50201255

Listed by: Adashun Jones, Inc.

The perfect combination of classic lines and highly creative remodeling define this ranch home on a corner lot, in Elm Acres. This seller achieved every want of today's buyer! Great room with oversized windows and drop dead beautiful dry stack stone fireplace with twin bookcases. Huge kitchen with new cabinets, snack bar and quartz countertops that stretch forever. Beautiful master features 2 closets, on suite bath plus deck access. Lower level with additional finished space. Perfect home to entertain in and close to everything on the east side. Fenced backyard. Alexa play Frank Sinatra!

FEATURES

County
Muni.
Acreage
Source of Acreage Info
Zoning
Taxes (2018)
Total Sq. Ft.
Above Grade Sq. Ft.
Below Grade Sq. Ft.
Age/Year Built
Exterior Finish
Style
School Dist.

Fond du Lac
City of Fond du Lac
0.41
Assessor/Public Record
Residential
3,467
2,799
2,278
521
1956
Stone
1 Story
Fond du Lac

AMENITIES

Type. **Residential**
Heating/Cooling **Central A/C, Forced Air**
Waste **Municipal Sewer**
Water **Municipal Public Water**
Basement **Crawl, Partial Basement, Partial Finished**
Garage Style **Attached**
Garage Spaces **2 Car**
Garage Total **2**

INCLUSIONS / EXCLUSIONS

Inclusions: Ovens, Garbage Disposal & Recycle Bins, Garage Door Opener (1 Remote), Dishwasher, Bar Refrigerator
Exclusions: Seller's Personal Property

ROOM SIZES

Room, Dimensions, Level
Master Bedroom, 14x15, Main
Bedroom 2, 13x17, Main
Bedroom 3, 12x15, Main
Laundry Room, 11x13, Main
Kitchen, 13x20, Main

Room, Dimensions, Level
Living Room, 15x21, Main
Foyer, 8x7, Main
Rec Room, 29x12, Lower
Den/Office, 12x11, Lower

DIRECTIONS

East on Johnson St. (Hwy 23) to Elm Acres Dr., south to address.



This information, provided by seller, listing broker, and other parties, may not have been verified
In our opinion the information on this sheet is true but not guaranteed, and is subject to change or correction at any time.

