

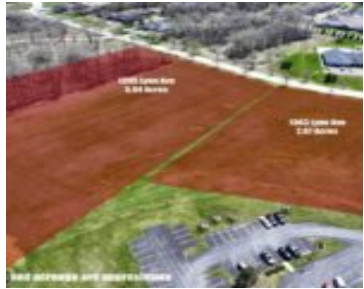
1395 LYNN AVENUE 14, FOND DU LAC, WI, 54935

<https://www.adashunjones.com>

1395 LYNN Avenue
14, FOND DU LAC,
WI, 54935



\$653,400

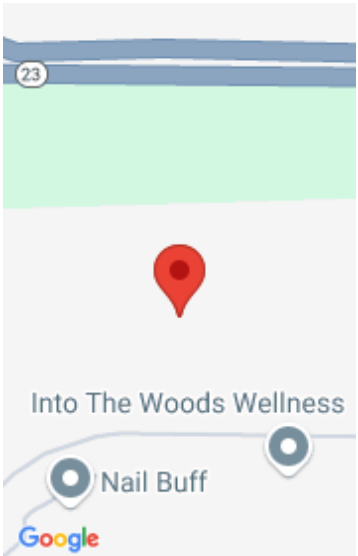


This 5.94 Acre Parcel is conveniently located right off of Highway 23, near the Aurora Medical Clinic. The zoning is O - Office District which allows for a variety of uses, including but not limited to financial institution, place of worship, day care, municipal facilities, personal services such as barbershop, salon, pet grooming, etc. Call...

- Land
- COMMERCIAL, Vacant Land/Acreage
- Active



Vickie
Adashun Jones, Inc.



Features

GarageYN: No

FireplaceYN: No

Lot Features: City Lot, Wooded

Tax Amount: 5432.89

AttachedGarageYN: No

PoolPrivateYN: No

Utilities: Electricity Available, Gas

Amenities

Waterfront available: No

Sewer: Municipal Sewer

Water Source: Municipal/City

Building Details

NewConstructionYN: No

Agent Details

Agent Full Name: Vickie L Huck

Agent Email: vhuck@adashunjones.com