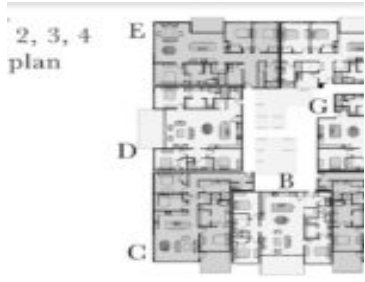


1931 HOLMGREN WAY 206, GREEN BAY, WI, 54304

https://www.adashunjones.com

1931 HOLMGREN  
Way 206, Green  
Bay, WI, 54304



Experience luxury living in this stunning condo residence in pro football's most historic team neighborhood! Boasting floor to ceiling windows, you'll enjoy panoramic views of the Stadium District every day. The spacious master suites offer the ultimate in comfort and relaxation w/walk in closet, bath and sauna. The chef inspired kitchen is perfect for entertaining...

- 3 beds
- 2 baths
- Residential
- Condo,Condominium
- Active
- 2005 sq ft



**Robin**  
Realty Executives Fortitude



---

## Features

<b>GarageYN:</b> No	<b>AttachedGarageYN:</b> No
<b>FireplaceYN:</b> No	<b>PoolPrivateYN:</b> No
<b>Features:</b> Balcony/Deck/Patio,Gas,Kitchen Island,One,Pantry	<b>Above Grade Finished Area, sq ft:</b> 2005
<b>Inclusions:</b> Fridge, stove, microwave, dishwasher, washer, dryer	<b>Exclusions:</b> Sellers personal property

---

## Amenities

<b>Waterfront available:</b> No	<b>Amenities:</b> Dishwasher,Dryer,Microwave,Range/Oven,Refrigerator,Washer
<b>Water Source:</b> Municipal/City	<b>Sewer:</b> Municipal Sewer

---

## Room Sizes

Room type	Dimensions	Level
Bedroom 1	14x13	Main
Bedroom 2	13x17	Main
Bedroom 3	12x17	Main
Kitchen	15x16	Main
Living Or Great Room	17x11	Main
Dining Room	17x11	Main

## Building Details

**NewConstructionYN:** No

**Exterior material:**  
Aluminum/Steel,Stone,Wood/Wood Shake/Cedar

**Heating:** Central A/C, Forced Air

**Parking:** Elec Vehicle Charge Station(s),Heated,Parking Space,Underground

## Agent Details

**Agent Full Name:** Robin Baade

**Agent Email:** rb@plusonerealtygroup.com