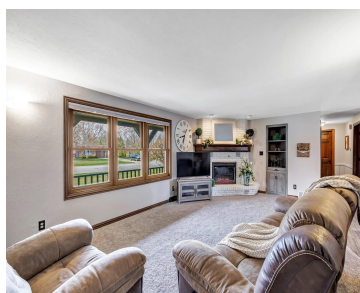


413 FOX CROFT DRIVE, DE PERE, WI, 54115

<https://www.adashunjones.com>

413 FOX CROFT
Drive, DE PERE, WI,
54115

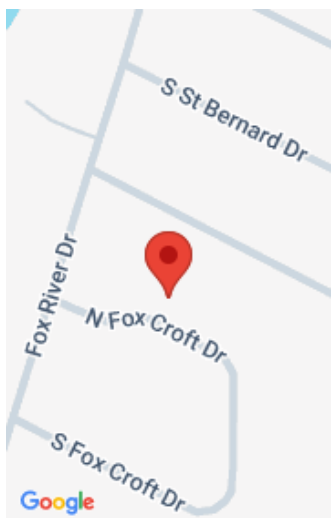


This beautifully updated ranch home situated just a short walk from the scenic Fox River offers a perfect blend of modern finishes and cozy charm! This home features an inviting LR w/ an open staircase, FP w/ brick surround and adorable built-ins. The well-appointed, updated kitchen offers a SS appliance package, pantry, and a generous...

- 3 beds
- 3 baths
- Residential
- Residential
- Active
- 2277 sq ft



Sarah
Shorewest, Realtors



Features

GarageYN: No

FireplaceYN: No

ExteriorFeatures: Deck, Fenced Yard, Patio, Storage Shed

Above Grade Finished Area, sq ft: 1436

Tax Amount: 4447.43

Exclusions: Washer, dryer, hot tub

AttachedGarageYN: No

PoolPrivateYN: No

Features: At Least 1 Bathtub, Gas, Hi-Speed Internet Availbl, One, Water Softener-Own

Below Grade Finished Area, sq ft: 841

Inclusions: Refrigerator, stove, dishwasher, microwave, window treatments, storage shed, TV mount, garage openers (4), water softener.

Amenities

Waterfront available: No

Water Source: Municipal/City

Amenities: Dishwasher, Microwave, Range, Refrigerator

Sewer: Municipal Sewer

Room Sizes

Room type	Dimensions	Level
Bedroom 1	12x14	Main
Bedroom 2	11x14	Main
Bedroom 3	10x11	Main
Family Room	33x24	Lower
Kitchen	21x11	Main
Living Or Great Room	26x13	Main
Other Room	8x6	Main
Other Room 2	12x15	Main

Building Details

NewConstructionYN: No

Heating: Central A/C, Forced Air

Exterior material:
Aluminum/Steel, Brick, Deck, Fenced Yard, Patio, Storage Shed

ArchitecturalStyle: Ranch

Basement: Full, Partial Fin. Contiguous, Partial Finished Pre2020, Radon Mitigation System, Sump Pump

Parking: Attached, Opener Included

Agent Details

Agent Full Name: Sarah Huben

Agent Email: swinnekens@shorewest.com

Attribution Contact: OFF-D: 920-362-0343