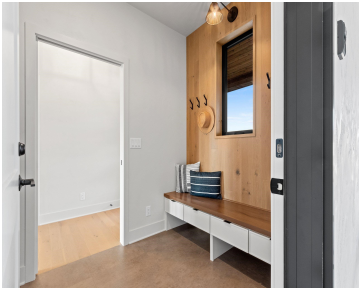


435 RIVERVIEW RIDGE PLACE, COMBINED LOCKS, WI,
54113

<https://www.adashunjones.com>

435 RIVERVIEW
RIDGE Place,
COMBINED LOCKS,
WI, 54113



Seller is offering \$15,000 towards buying down your interest rate! Call us for details! THE YELLOWSTONE offers 2,200+ sqft of luxuriously finished space. Professionally designed + expertly constructed, you will be blown away by the quality and attention to detail GRIFFIN BUILDERS has been delivering for generations. The open floor plan features a large kitchen...



Jenny
LPT Realty

- 3 beds
- 3 baths
- Residential
- Residential
- Active
- 2248 sq ft



Features

GarageYN: No

AttachedGarageYN: No

FireplaceYN: No

PoolPrivateYN: No

Lot Features: Cul-De-Sac, Rural - Subdivision

Features: At Least 1 Bathtub,Cable Available,Gas,Kitchen Island,One,Pantry,Utility Room,Vaulted Ceiling,Walk-in Closet(s),Walk-in Shower,Wood/Simulated Wood Fl

Above Grade Finished Area, sq ft: 1502

Below Grade Finished Area, sq ft: 746

Inclusions: Refrigerator, Oven/Range, Dishwasher.

Exclusions: Seller's Personal Property.

Amenities

Waterfront available: No

Amenities: Dishwasher,Range/Oven,Refrigerator

Water Source: Municipal/City

Sewer: Municipal Sewer

Room Sizes

Room type	Dimensions	Level
Bedroom 1	13x13	Main
Bedroom 2	13x12	Main
Bedroom 3	14x12	Lower
Kitchen	10x15	Main
Living Or Great Room	23x15	Main
Other Room	6x4	Main
Other Room 2	26x15	Lower

Building Details

NewConstructionYN: Yes

Basement: Finished Contiguous,Full,Full Sz Windows Min 20x24

Parking: Attached,Opener Included

Heating: Central A/C, Forced Air

Exterior material: Vinyl,Wood/Wood Shake/Cedar

Agent Details

Agent Full Name: Jenny M Landro

Agent Email: jennifer@landrorealty.com