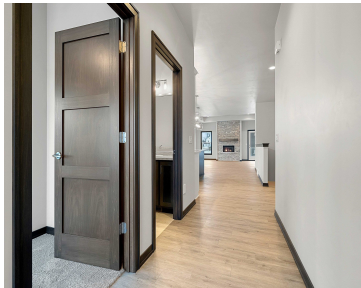
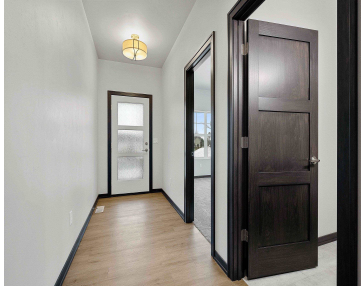


469 PAPERMILL CIRCLE, KIMBERLY, WI, 54136-2702

<https://www.adashunjones.com>

469 PAPERMILL
Circle, Kimberly,
WI, 54136-2702



\$369,900

Beautiful open concept 1-story side by side condo. Spacious great room with tray ceiling, large daylight windows, gas FP & door to maintenance-free deck. Kitchen w/abundant custom cabinets & island. Large master suite w/tray ceiling, walk-in closet & bath features dual sinks & walk-in shower. 2nd bedroom/office & 1st floor laundry. Full basement w/egress windows...

- 2 beds
- 2 baths
- Residential
- Condo,Condominium
- Closed
- 1561 sq ft



Lisa
Resource One Realty, LLC



Features

GarageYN: No

FireplaceYN: No

Features: Gas,Kitchen
Island,One,Pantry

Tax Amount: 5338.31

AttachedGarageYN: No

PoolPrivateYN: No

Above Grade Finished Area, sq ft: 1561

Inclusions: Dishwasher, Microwave, Landscaping,
Driveway, 1 Year Builder Warranty from Date of Closing

Amenities

Waterfront available: No

Water Source: Municipal/City

Amenities: Dishwasher,Microwave

Sewer: Municipal Sewer

Room Sizes

Room type	Dimensions	Level
Bedroom 1	17x15	Main
Bedroom 2	14x11	Main
Kitchen	16x13	Main
Living Or Great Room	20x16	Main
Dining Room	16x10	Main
Other Room	7x6	Main

Building Details

NewConstructionYN: No

Exterior material: Stone,Vinyl

Heating: Central A/C, Forced Air

Parking: Attached,Garage - 2 Car

Agent Details

Agent Full Name: Lisa R Parkos-Verhagen

Agent Email: lparkos@resource1gb.com