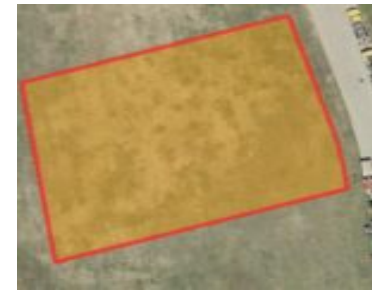
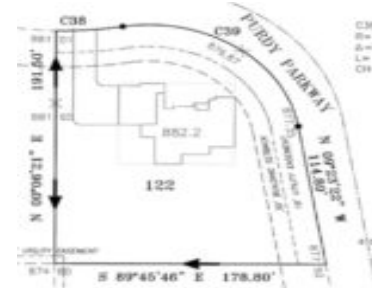


7431 PURDY PARKWAY 122, APPLETON, WI, 54913

<https://www.adashunjones.com>

7431 PURDY
Parkway 122,
Appleton, WI,
54913



Enjoy the benefits of a southern exposure backyard or take in stunning western sunsets—perfect for those who love natural light and picturesque evening views. This .70-acre lot in the scenic Apple Hill Farms Subdivision on the north side of Appleton. Its location near schools, restaurants, highways, and the Apple Creek YMCA nature preserve makes it...

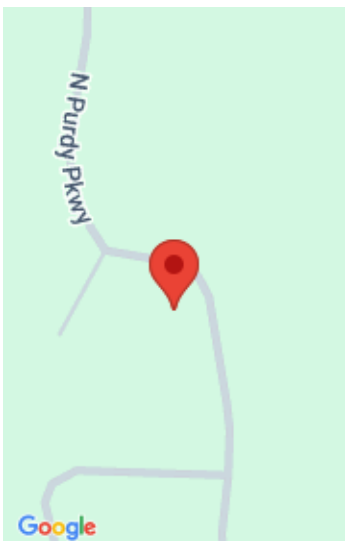
- Land
- Residential, Vacant Land/Acreage
- Closed



Danielle
Coldwell Banker Real Estate Group



Bruce
Coldwell Banker Real Estate Group



Features

GarageYN: No

AttachedGarageYN: No

FireplaceYN: No

PoolPrivateYN: No

Lot Features: Suburb **Utilities:** All Underground, Cable Available, Electricity Available, Gas

Tax Amount: 839.6

Amenities

Waterfront available: No

Water Source: Municipal/City

Sewer: Municipal Sewer

Building Details

NewConstructionYN: No

Agent Details

Agent Full Name: Danielle M Hart

Agent Email: dhart@coldwellhomes.com